



**Linetec**

A Centuri Company



# Linetec Services Overview

September 2024

**THINK AHEAD »**





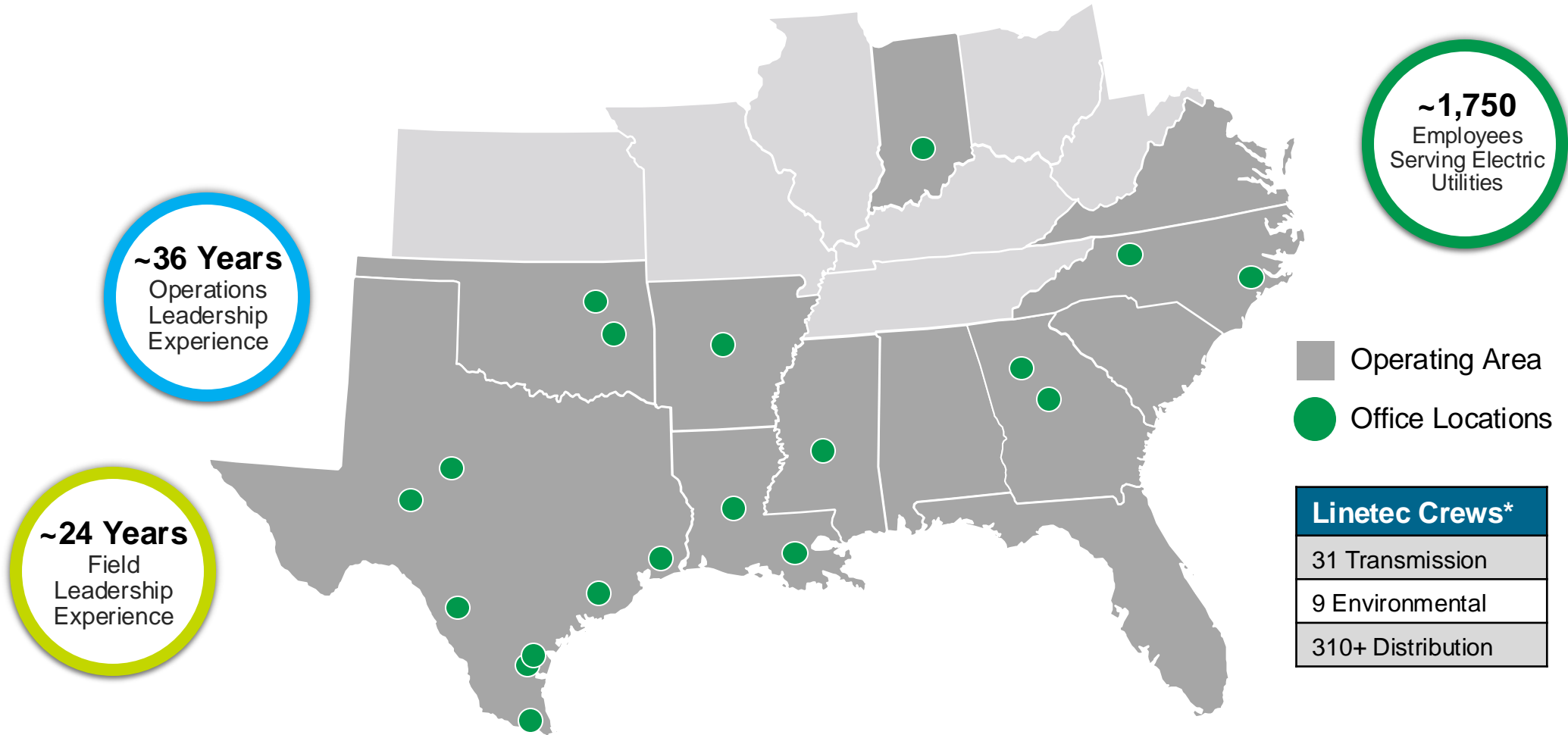
# Linetec Services Company Overview & Experience

Linetec Services is a premier electric distribution, transmission, telecom, substation and emergency response services contractor serving utility customers throughout the Mid-Atlantic and Gulf Coast regions. We serve over 30 valued IOU's, Cooperatives, and Municipalities throughout our geographic footprint with over 365 distribution, transmission, telecom, substation and environmental crews.

Our company's success and reputation is built on a highly qualified Workforce with Safety and Training programs developed to exceed the long-term expectations of our customers. Linetec differentiates itself through the ability to attract, retain, and develop the capabilities of our employees while providing a path for future leaders.

We are **DRIVEN** to provide a **SAFE** work environment that **EMPOWERS** our people to **SERVE** our **VALUED** utility clients in a **FAIR** and **ETHICAL** manner.

# Operational Locations & Crew Counts



\*Average Crew Counts

# Linetec Service Capabilities



## Distribution

- Overhead and underground distribution construction, conversion, maintenance and upgrades
- Turnkey project and construction management
- Storm hardening / reliability
- Emergency storm / disaster restoration service



## Transmission

- Line construction, maintenance, rebuild, upgrades, relocation and inspection
- Energized work to 500kV
- Turnkey project and construction management
- Foundation and drilling
- Right-of-way access construction
- Emergency storm / disaster restoration service



## Telecom / Fiber

- Telecom & Electric utility pole installations
- One-touch make-ready
- OH / UG fiber installations



## Substation

- Substation construction, maintenance, rebuild and upgrades



# Transmission Capabilities

- » Transmission Line Construction & Maintenance (up to 345kV)
- » New Line construction: 69kV-345kV
- » Line maintenance, rebuild, upgrade, relocation, and inspection
- » Energized work up to 161kV
  - Hot Stick pole changes outs
  - Insulators & framing change outs
- » Emergency storm/disaster service restoration
  - Our T-Line team rebuilt 22 miles in (1) month for Hurricane Laura
- » Right-of-way access construction
  - SWPPP compliance & access matting

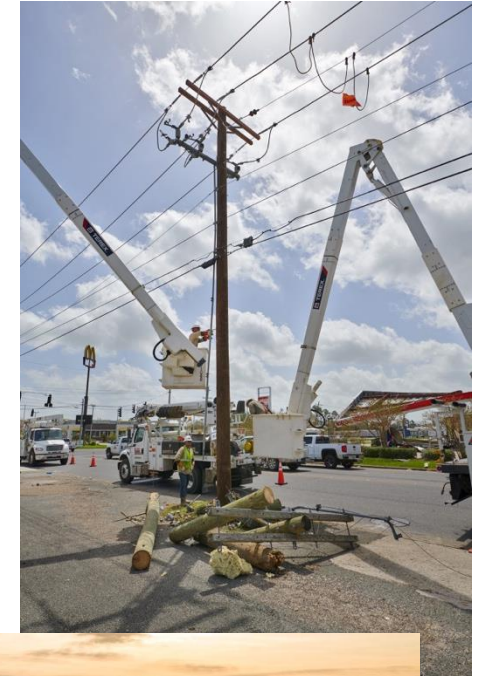




# Emergency Response

As part of the communities where we operate, Linetec knows first-hand the devastation that storms and other disasters can inflict. Often left without power themselves, our crews proudly provide storm and disaster response to restore electric service to affected areas and homes.

Linetec clients trust us to help their customers turn the lights back on. Our highly-experienced crews work tirelessly and safely to repair electric systems, replace damaged equipment, and restore power as quickly as possible.





# Emergency Response

## » Storm Support

- Focused on our capability to provide nation-wide resources to support restoration and recovery for our partners.
- In house equipped to handle wet, dry, and mountainous terrain.

## » Emergency Response Crews

- 31 Transmission Crews
- 9 Environmental Crews
- 300+ Distribution Crews
  - Storm Management



# Safety Culture

## » Rules to Live By

- Deenergize, Test & Ground
- Clearance/Tags/Hold Orders
- Cover-Up
- Fall Protection
- PPE (Electrical)

## » Critical Rules

- Minimum Crew Requirements
- Apprentice Supervision
- Crew Supervision
- Digger Operation
- Driving
- Line of Fire
- Job Hazard Analysis
- Working Alone
- Energized Work
- Pre-Trip Inspections
- PPE



**Linetec**  
A Centuri Company

**Life Saving Rules to Live By**

- De-energize, Test, Ground** - All equipment shall be treated as energized until tested, grounded, flagged and tagged.
- Clearance/Tags/Hold Orders** - Employees must follow all clearance, tags and/or hold orders as directed by controlling authority including Lock Out Tag Out - for energized work NRO shall be obtained where possible.
- Cover-Up** - Proper insulated protective equipment shall be used where there is potential for electrical contact or arc flash in excess of 50 volts.
- Fall Protection** - 100% fall protection shall be used anytime working above 4'.
- PPE** - Electrical PPE (including gloves and sleeves), FR clothing, Hard Hat, and rubber cover up are required cradle to cradle while working in/from buckets, ground to ground and lock-lock unless otherwise stated in manual or dictated by customer requirements.

All employees working for Linetec are responsible for adhering to the Life Saving Rules to Live By at all times. Failure to do so shall be considered a fatal violation and may result in disciplinary action up to and including termination of employment on first offense. In addition, all employees are responsible for issuing a "Stop Work" when observing others in violation of a Life Saving Rule to Live By. Employees observing said violations and choosing not to issue a "Stop Work" may be held accountable up to and including termination.

**Critical Rules**

- Minimum Crew Requirements** - No field work is allowed below minimum crew standard without supervision (GF or above) approval.
- Crew Supervision** - Foremen must be present on jobsite or delegate responsibilities to A-Lineman or GF.
- Digger Operation** - Must be a qualified Operator or work under direct supervision of a qualified operator until certified (1-year experience AND Linetec Qualified Operator Training) and/or hold NCCCO license.
- Apprentice Supervision** - Apprentice linemen must be supervised by an A-Lineman or above until task-competency is verified.
- Driving** - Employees must be authorized and possess a valid driver's license for the equipment being used to operate a company vehicle.
  - Hands free must be utilized in passenger vehicles.
  - Zero mobile device use allowed (that distracts from your duties) by operator while driving or operating bucket or digger.
  - All applicable traffic and vehicle laws must be followed at all times including any and all DOT requirements.
  - Zero tolerance for over 90 mph or 20 mph over posted speed limit.
- Line of Fire** - Line of Fire hazards should be identified and mitigated on JHA.
- Job Hazard Analysis** - JHA's must be completed before all jobs and any time the job requires a significant change, no exceptions.
- Working Alone** - Working alone is prohibited when completing any high-risk activity unless prior authorization is given by GF and above and check-in procedures must be followed.
- Energized Work** - Employees must be authorized and under the direct oversight of a Qualified Observer to work on lines >600 volts.
- Pre-Trip Inspections** - A pre-trip inspection must be completed on all vehicles and trailers before leaving the yard each day.

9/16/2022



# TRAINING

- » Our Department of Labor approved four-year program is available to all Linetec apprentices to ensure our crews receive the highest quality training to ensure our utility clients receive the performance and customer service they deserve.
  - 8,000 hours of blended training
  - Training delivered at one of our facilities or on-site via one of our four mobile training trailers
  - Highly qualified instructors bring over 185 years of combined experience
  - At completion of the program, apprentices will receive a DOL Journeyman Certification and Linetec Journeyman certificate
- » Linetec is leading the way by issuing all Linetec Apprentices an iPad to access assignments, course materials, and training videos.

We are **DRIVEN** to provide a **SAFE** work environment that **EMPOWERS** our people to **SERVE** our **VALUED** utility clients in a **FAIR** and **ETHICAL** manner.





**Linetec**

A Centuri Company

# Thank You

[www.LinetecServices.com](http://www.LinetecServices.com)

**Linetec Services**

13201 Northwest Freeway, Suite 300

Houston, TX 77040

**281.501.0592**

**Info@LinetecServices.com**



**Linetec**

A Centuri Company